

June 20th 1901

4771 B.

Survey to determine property lines
on East side of Pacific Avenue and
on North & South side of 29th & 30th Sts

Commence at measurement no 90-28th
& Pacific Avenue back sight to measurement
62-10' at 10' W of Center of Washington Ave
and 28th St.)

(Measure from point 90 East 100' N of center
of curve of 28th St) 224.55' & South 61.1' to corner
of fence on East side R.R. - at 90' Center R.R. Marker

Set on point 90 - 28th & Pacific 115' from 62
28th & Washington Angle Right & South
92.05' Repeat 100' South 3.06' N
at 69' Center R.R. switch to bearing station
at 769.53 Set Hub for Center Pacific Ave &
29th Street

(From this Hub measure East 59.2 center
U.P.R.R. track)

(From Hub east to fence on East of R.R. road
200.12 feet)

(Reference this Hub see opposite)

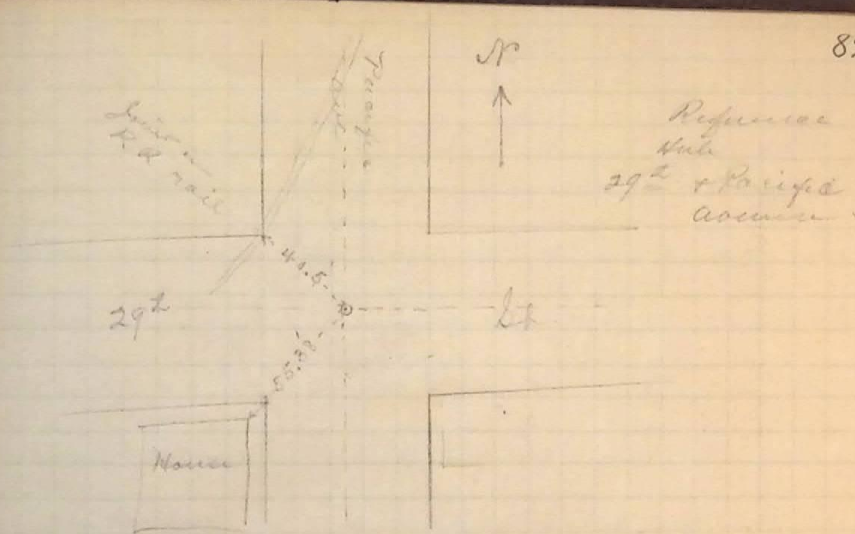
at 801.53 - a point 11.6' West of 3 lines close
together all three

Continue South at 1529.06 Set Hub Street
Center 30th & Pac Ave.

From this Hub East 27.65' Center
U.P.R.R. Road track

at 29.14 East of Hub. a State Landmark
65.10'

at 222.7 East to fence, 222.7 N.E. corner



Trinity & Smith Co